



A Division of:
CWS Industries (Mfg) Corp.
19490-92nd Avenue, Surrey,
BC, Canada, V4N 4G7

Tel: 604.888.9008
Fax: 604.888.9006
Toll Free: 1.800.661.9008
www.cwsindustries.com

Operating Manuals

CWS Lifting Device



Title: CWS Lifting Device Operating Manuals		Document #: ENG0204	
Date: May 12, 2008	Revision: 0	Page: 1 of 5	



A Division of:
CWS Industries (Mfg) Corp.
19490-92nd Avenue, Surrey,
BC, Canada, V4N 4G7

Tel: 604.888.9008
Fax: 604.888.9006
Toll Free: 1.800.661.9008
www.cwsindustries.com

Table of Contents:

1. Working Load Limit and Warnings
2. Product Life - Wear Limits
3. Design Criteria
4. Quality Assurance Process
5. Product Marking and Certificates
6. Additional information and options available

Appendix A: Lifting Device Written Certificate - Duplicate.

Appendix B: WCB WorkSafe Sheet – “Hydraulic Excavators: Lifting with Slings”.

Title: CWS Lifting Device Operating Manuals		Document #: ENG0204	
Date: May 12, 2008	Revision: 0	Page: 2 of 5	



A Division of:
CWS Industries (Mfg) Corp.
19490-92nd Avenue, Surrey,
BC, Canada, V4N 4G7

Tel: 604.888.9008
Fax: 604.888.9006
Toll Free: 1.800.661.9008
www.cwsindustries.com

1. Working Load Limit and Warnings.

Please refer to the Appendix A for the serial number specific certificate of Maximum Lifting Capacity (Working Load Limit)

Refer to the Appendix B. for the WCB "Hydraulic Excavators: Lifting with Slings" Work Safe Information Sheet.

This Lifting Device is designed to be used with a hydraulic excavator equipped with a Manual Wedge Quick Coupler, not supplied with the device. The Quick Coupler must match the class, capacity and fit properly to the Lifting Device. Refer to the Quick Coupler Operating Manuals for the coupler's capacity, fit up and installation procedures. Refer to the Hydraulic Excavator Manuals for Lifting Charts and Safe Lifting procedures.

WARNING

- Inspect the Lifting Device daily, before using, to ensure it is in proper operating condition.
- Quick Coupler to be used with this Lifting Device must meet or exceed the lifting capacity of this device.
- Lifting Device may disengage from Quick Coupler if not properly installed. Refer to the Quick Coupler Operating Manuals for proper attachment installation.
- A falling load may cause serious injury or death.
- Never apply more force or lift more than the Lifting Device is certified for.
- Never lift, lower or move a slung load in close proximity to workers when there is a possibility of the worker being struck.
- Only certified shackles and hooks are allowed to be used with the CWS Lifting Device.
- Remove from service if a crack or nick is discovered. Contact CWS Engineering Department for safe repairing procedure if applicable.
- Never use the Lifting Device that is worn beyond the limits shown in Figure 1 of the Operating Manuals. Contact CWS Engineering Department for safe refurbishing procedure if applicable.
- Never repair, alter, rework or reshape a CWS Lifting Device by welding, heating or bending.
- Lifting, lowering or moving of workers suspended of the CWS Lifting Device is not permitted.

WARNING_LIFTING_DEVICE_6p25X4p25 LABEL.pdf

WARNING_LIFTING_DEVICE_7p5X4p625 LABEL.pdf

Title: CWS Lifting Device Operating Manuals		Document #: ENG0204	
Date: May 12, 2008	Revision: 0	Page: 3 of 5	



A Division of:
CWS Industries (Mfg) Corp.
19490-92nd Avenue, Surrey,
BC, Canada, V4N 4G7

Tel: 604.888.9008
Fax: 604.888.9006
Toll Free: 1.800.661.9008
www.cwsindustries.com

2. Product Life - Wear Limits

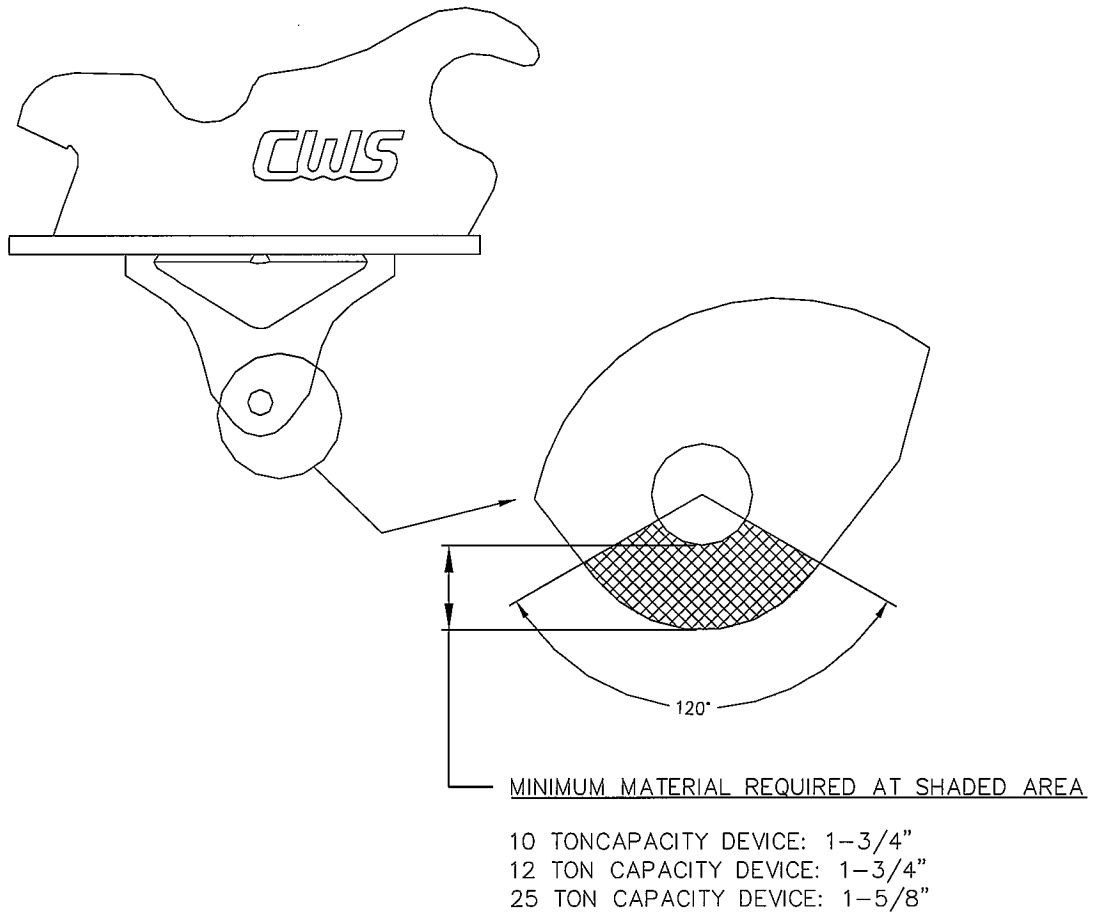


Figure 1. Wear Limits

Title: CWS Lifting Device Operating Manuals		Document #: ENG0204	
Date: May 12, 2008	Revision: 0	Page: 4 of 5	



A Division of:
CWS Industries (Mfg) Corp.
19490-92nd Avenue, Surrey,
BC, Canada, V4N 4G7

Tel: 604.888.9008
Fax: 604.888.9006
Toll Free: 1.800.661.9008
www.cwsindustries.com

3. Design Criteria

The CWS Lifting Device is designed with the minimum 5:1 Design Factor. It means that the ultimate load, defined as the average load or force at which the product fails or no longer supports the load, is at least five times greater than the product is certified to lift. All critical welds were designed with at least 10:1 safety factor.

Critical components of the CWS Lifting Devices are fabricated from Quench and Tempered materials to provide consistency of performance needed especially in overhead lifting. The Quench and Tempered plate will deform before ultimate failure, thus giving warning and reducing potential for catastrophic failure.

4. Quality Assurance Process

Fabrication of the CWS Lifting Devices is closely monitored through the production process by the Quality Control Officer. The parameters checked and recorded during production include, but are not limited to:

- a. material used with Mill Certificates
- b. preheat before welding
- c. weld size
- d. Nondestructive examination of critical welds

5. Product Marking and Certificates

Each CWS Lifting Device is clearly and permanently marked with the Maximum Lifting Capacity (Working Load Limit). Each product is shipped with the written, serial number specific, certificate sealed and signed by a Professional Engineer. Each Product is clearly marked with the warning label making sure that the summary of the safety information reaches the end user. More information is included in this Manual. The dealer is responsible for ensuring that the end user receives the Manuals.

6. Additional information and options available.

Quality Control Record, material Mill Certificates and Testing results are available upon request. Also, if requested at the time of order, Lifting Device can be Proof Tested to 2X Working Load Limits with Certificate. Custom sizes of Lifting Devices are available upon request.

Title: CWS Lifting Device Operating Manuals		Document #: ENG0204	
Date: May 12, 2008	Revision: 0	Page: 5 of 5	

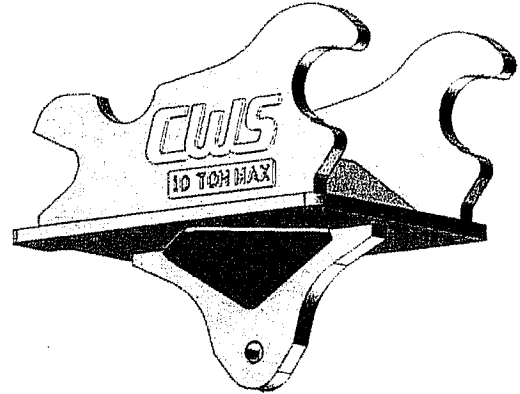


A Division of:
CWS Industries (Mfg) Corp.
19490-92nd Avenue, Surrey,
BC, Canada, V4N 4G7

Tel: 604.888.9008
Fax: 604.888.9006
Toll Free: 1.800.661.9008
www.cwsindustries.com

CERTIFICATE

10 TON –HE200 Class LIFTING DEVICE TO FIT WBM 200 CLASS QUICK COUPLER



P/N: 0044089 Rev. 0

S/N: WO0801951

This document certifies that the Lifting Device bearing the Serial Number stated above is certified for a Maximum Lifting Capacity of 10 Ton (20,000 Lbs).

The Lifting Device is designed to be used with a Hydraulic Excavator equipped with a Manual Wedge Style Quick Coupler. The Lifting Device can be equipped with a Bolt Type Shackle of Working Load Limit of 10 Ton or greater.

WARNING:

Any device of lower capacity, such as hook or shackle, attached to the Lifting Device will reduce the overall capacity of the group to the capacity of the weakest component.

WARNING:

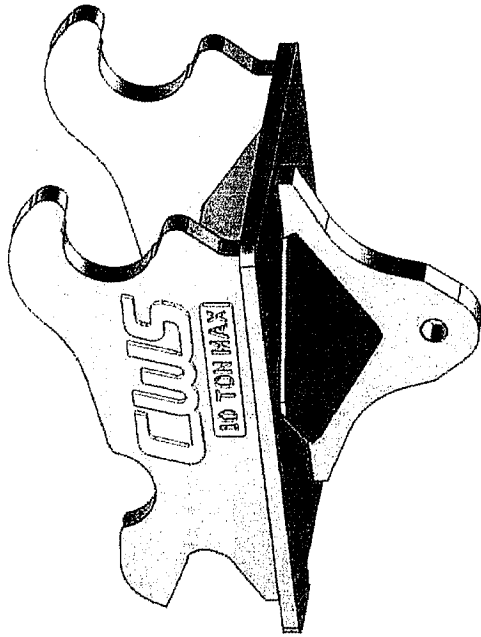
Read and understand the Lifting Device Operating Manuals before using the device.

Date of Issuance: May 13, 2008

Title: Certificate – 10 ton		Document #: ENG0202
J:\Engineering\Eng_Support\Eng Documents\0201-0400\ENG0202.doc		Area: Eng/QA
Print Date: Jun.13, 08	Revision: 0	Page: 1 of 1
Prepared by: Tomasz Morawski	Date Created: May13, 2008	

CWS Lifting Device Product Line

Engineering Certified Lifting Device for Improved Safety
 Lugging Plate Adapter to suit CWS/WBM/IMAC PW Quick Couplers
 Includes: Bolt-Type Shackle and Maximum Lifting Capacity Tag
 Optional: Jaw & Swivel Hook



June 13, 2008

CWS Mach. Class	Mach. Max. Lift Cap. App. [lbs]	CWS Lift Day Rated Cap. [ton]	CWS Lift Day Rated Cap. [lbs]	Device Wt. Approx. [lbs]	Bolt Type Shackle Size, WLL (PN)	Jaw & Hook PN	List Price w/Bolt-Type Shackle	List Price w/Jaw & Hook
HE120	17,000	8	(16,000)	450	1", 8.5t (1019551)	8-S-1/297413	\$ 6,955	\$ 8,725
HE150	21,000	8	(16,000)	500	1", 8.5t (1019551)	8-S-1/297413	\$ 7,730	\$ 9,495
HE200	27,000	10	(20,000)	530	1-1/4", 12t (1019597)	10-S-1/297618	\$ 8,195	\$ 10,155
HE250	31,000	12	(24,000)	660	1-1/4", 12t (1019597)	15-S-1/297814	\$ 8,500	\$ 10,990
HE300	36,000	15	(30,000)	900	1-1/2", 17t (1019631)	15-S-1/297814	\$ 11,825	\$ 14,155
HE400	49,000	25	(50,000)	1280	1-3/4", 25t (1019659)	25-S-1/298118	\$ 12,650	\$ 19,295
HE550	65,000	35	(70,000)	1450	2", 35t (1019677)	35-S-1/298216	\$ 14,470	\$ 26,920
HE750	75,000	45	(90,000)	1800	2-1/2", 55t (1019695)	45-S-1/298314	\$ 16,755	\$ 33,685

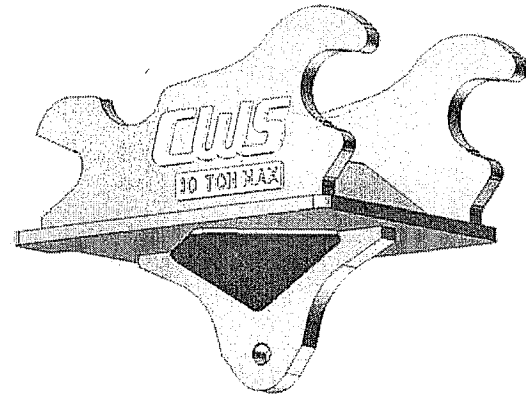
CWS Lifting Device

An Engineering Certified Lifting Device for Improved Safety.

- Lugging Plate Adapter to suit CWS/WBM/IMAC PW Quick Couplers.

Includes: Bolt-Type Shackle and Maximum Lifting Capacity Tag.

Optional: Jaw & Swivel Hook.



SEPT 2008 PRICING

CWS Mach. Class	CWS Lift.Dev. Rated Cap.		Device Wt Approx. [lbs]	List Price w/ Bolt-Type Shackle	List Price w/ Jaw & Hook
	[ton]	(lbs)			
HE120	8	(16,000)	450	\$ 4,535	\$ 6,275
HE150	8	(16,000)	500	\$ 4,870	\$ 6,610
HE200	10	(20,000)	530	\$ 5,220	\$ 7,165
HE250	12	(24,000)	660	\$ 5,980	\$ 8,450
HE300	15	(30,000)	900	\$ 7,125	\$ 9,395
HE400	25	(50,000)	1280	\$ 8,820	\$ 15,360
HE650	35	(70,000)	1450	\$ 9,955	\$ 19,620
HE850	45	(90,000)	1800	\$ 12,730	\$ 25,775

Note: Prices are subject to change without notice. Ex Works CWS Surrey.



A Division of:
CWS Industries (Mfg) Corp.
19490-92nd Avenue, Surrey,
BC, Canada, V4N 4G7

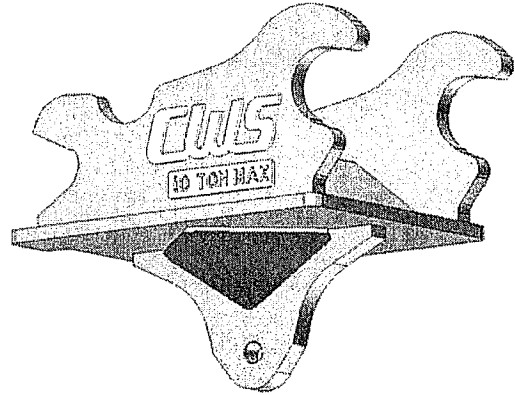
Tel: 604.888.9008
Fax: 604.888.9006
Toll Free: 1.800.661.9008
www.cwsindustries.com

CERTIFICATE

10 TON –HE200 Class

LIFTING DEVICE

TO FIT WBM 200 CLASS QUICK COUPLER



P/N: 0044089 Rev. 0

S/N: WO0801951

This document certifies that the Lifting Device bearing the Serial Number stated above is certified for a Maximum Lifting Capacity of 10 Ton (20,000 Lbs).

The Lifting Device is designed to be used with a Hydraulic Excavator equipped with a Manual Wedge Style Quick Coupler. The Lifting Device can be equipped with a Bolt Type Shackle of Working Load Limit of 10 Ton or greater.

WARNING:

Any device of lower capacity, such as hook or shackle, attached to the Lifting Device will reduce the overall capacity of the group to the capacity of the weakest component.

WARNING:

Read and understand the Lifting Device Operating Manuals before using the device.

Date of Issuance: May 13, 2008

Title: Certificate – 10 ton		Document #: ENG0202	
J:\Engineering\Eng_Support\Eng Documents\0201-0400\ENG0202.doc		Area: Eng/QA	
Print Date: Jun.13, 08	Revision: 0	Page: 1 of 1	
Prepared by: Tomasz Morawski	Date Created: May13, 2008		